

Modeling and Unified Modeling Language

UML

Author: JavaChamp Team

Senior Java Developer @QuizOver.com

Copyright (c) 2010-2015

Create, Share, and Discover Online Quizzes.

QuizOver.com is an intuitive and powerful online quiz creator. [learn more](#)

Join QuizOver.com



How to Analyze Stocks

By Yasser Ibrahim

1 month ago
12 Responses

© iStock: Thomson Moter



Pre Employment English

By Katharina jennifer N

5 months ago
19 Responses

© iStock: Albin



Lean Startup Quiz

By Yasser Ibrahim

2 months ago
16 Responses

© iStock: Gekwotwe Chua

Powered by QuizOver.com

The Leading Online Quiz & Exam Creator

Create, Share and Discover Quizzes & Exams

<http://www.quizover.com>

Disclaimer

All services and content of QuizOver.com are provided under QuizOver.com terms of use on an "as is" basis, without warranty of any kind, either expressed or implied, including, without limitation, warranties that the provided services and content are free of defects, merchantable, fit for a particular purpose or non-infringing.

The entire risk as to the quality and performance of the provided services and content is with you.

In no event shall QuizOver.com be liable for any damages whatsoever arising out of or in connection with the use or performance of the services.

Should any provided services and content prove defective in any respect, you (not the initial developer, author or any other contributor) assume the cost of any necessary servicing, repair or correction.

This disclaimer of warranty constitutes an essential part of these "terms of use".

No use of any services and content of QuizOver.com is authorized hereunder except under this disclaimer.

The detailed and up to date "terms of use" of QuizOver.com can be found under:

<http://www.QuizOver.com/public/termsOfUse.xhtml>

eBook Content License

Creative Commons License

Attribution-NonCommercial-NoDerivs 3.0 Unported (CC BY-NC-ND 3.0)

<http://creativecommons.org/licenses/by-nc-nd/3.0/>

You are free to:

Share: copy and redistribute the material in any medium or format

The licensor cannot revoke these freedoms as long as you follow the license terms.

Under the following terms:

Attribution: You must give appropriate credit, provide a link to the license, and indicate if changes were made. You may do so in any reasonable manner, but not in any way that suggests the licensor endorses you or your use.

NonCommercial: You may not use the material for commercial purposes.

NoDerivatives: If you remix, transform, or build upon the material, you may not distribute the modified material.

No additional restrictions: You may not apply legal terms or technological measures that legally restrict others from doing anything the license permits.

Table of Contents

Quiz Permalink: <http://www.quizover.com/question/modeling>

Author Profile: <http://www.quizover.com/user/profile/Java.Champ>

1. Unified Modeling Language

- Class Diagram
- Sequence Diagram

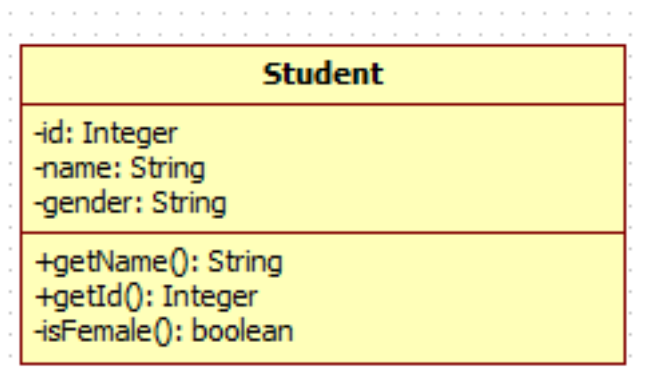
4. Chapter: Class Diagram

1. Class Diagram Questions

4.1.1. What is true about the following class Student depicted using UML?

Author: JavaChamp Team

What is true about the following class Student depicted using UML?



Please choose all the answers that apply:

- the attribute "id" is privately accessed
- the attribute "id" is publicly accessed
- getName, getId and isFemale are all attributes in class Student
- getName accepts a parameter of type String
- isFemale() is a protected method
- isFemale() is a private method

Check the answer of this question online at QuizOver.com:

Question: [attributes and methods in a class diagram in uml](#)

Flashcards:

<http://www.quizover.com/flashcards/attributes-and-methods-in-a-class-diagram-in-uml?pdf=1505>

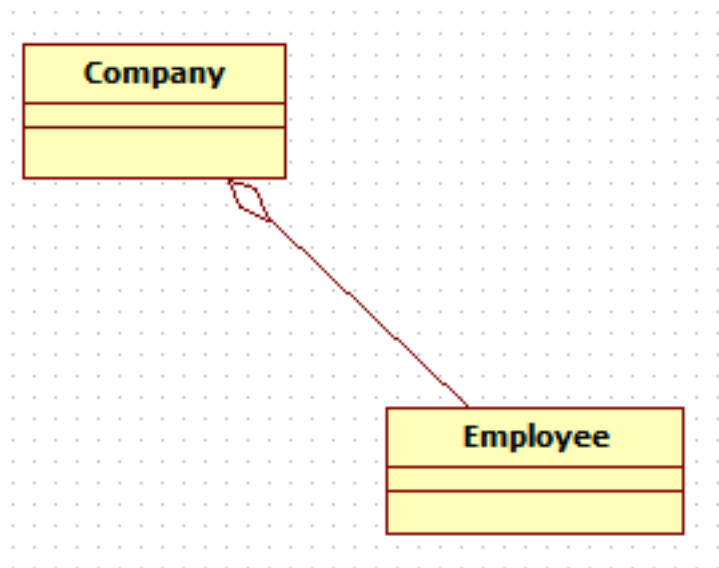
Interactive Question:

<http://www.quizover.com/question/attributes-and-methods-in-a-class-diagram-in-uml?pdf=1505>

4.1.2. What is true about the relationship between Company and Employee?

Author: JavaChamp Team

What is true about the relationship between Company and Employee?



Please choose all the answers that apply:

- this relationship is called composition
- this relationship is called aggregation
- Company is the parent class of this relationship
- Employee is the parent class of this relationship
- it means Employee inherits from Company

Check the answer of this question online at QuizOver.com:

Question: [a composite aggregation in class diagram in uml](#)

Flashcards:

<http://www.quizover.com/flashcards/a-composite-aggregation-in-class-diagram-in-uml?pdf=1505>

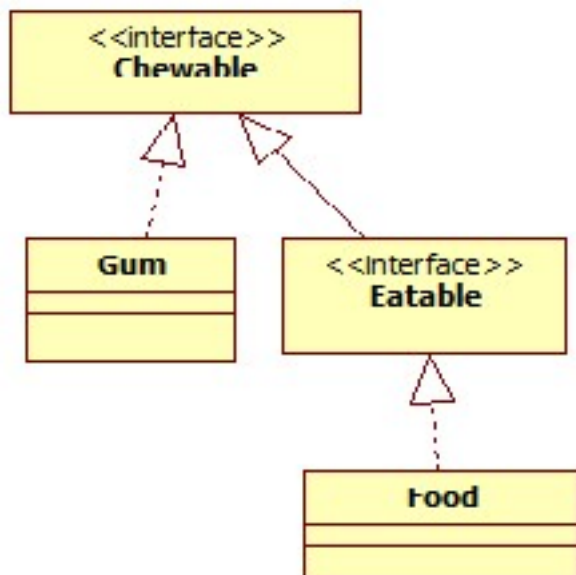
Interactive Question:

<http://www.quizover.com/question/a-composite-aggregation-in-class-diagram-in-uml?pdf=1505>

4.1.3. What best describe the relationships between classes in this class ...

Author: JavaChamp Team

What best describe the relationships between classes in this class diagram?



Please choose only one answer:

- it is a generalization relationship between Food and Eatable
- it is a realization relationship between Food and Eatable
- it is an association relationship between Food and Eatable

Check the answer of this question online at QuizOver.com:

Question: [realization in class diagram in uml](#)

Flashcards:

<http://www.quizover.com/flashcards/realization-in-class-diagram-in-uml?pdf=1505>

Interactive Question:

<http://www.quizover.com/question/realization-in-class-diagram-in-uml?pdf=1505>

4.1.4. How to set an attribute's visibility (access level) in UML?

Author: JavaChamp Team

How to set an attribute's visibility (access level) in UML?

Please choose only one answer:

- + public, ~package, - protected, # private
- + public, #package, - protected, ~ private
- # public, ~package, + protected, - private
- + public, ~package, # protected, - private

Check the answer of this question online at QuizOver.com:

Question: [public package protected private in uml](#)

Flashcards:

<http://www.quizover.com/flashcards/public-package-protected-private-in-uml?pdf=1505>

Interactive Question:

<http://www.quizover.com/question/public-package-protected-private-in-uml?pdf=1505>

4.1.5. What best describe the link between Book and Page?

Author: JavaChamp Team

What best describe the link between Book and Page?



Please choose all the answers that apply:

- it is an aggregation relationship
- it is a composition relationship
- Book is the parent class of this relationship
- it means that Page inherits from Book
- 1 means that a Book can have at least 1 Page
- 1 means that a Page must be part of one Book only

Check the answer of this question online at QuizOver.com:

Question: [composition in class diagrams uml](#)

Flashcards:

<http://www.quizover.com/flashcards/composition-in-class-diagrams-uml?pdf=1505>

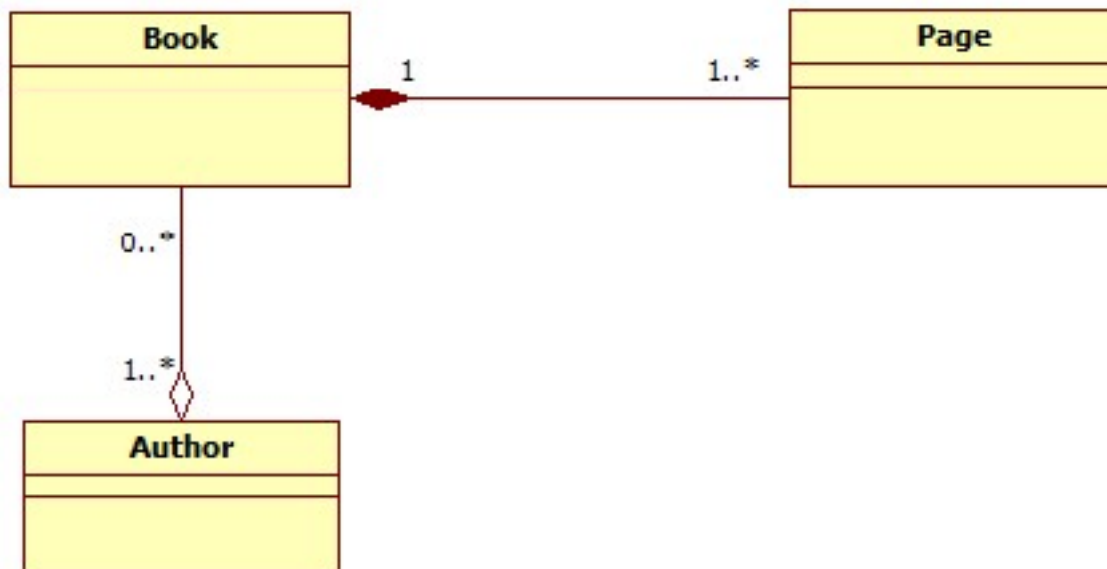
Interactive Question:

<http://www.quizover.com/question/composition-in-class-diagrams-uml?pdf=1505>

4.1.6. How the multiplicities of this diagram are interpreted?

Author: JavaChamp Team

How the multiplicities of this diagram are interpreted?



Please choose all the answers that apply:

- a book must have at least one page
- a book can be authored by one author only
- an author must have at least one book
- a page can be part of one or many books
- many books can be authored by the same author

Check the answer of this question online at QuizOver.com:

Question: [multiplicity in uml in class diagram](#)

Flashcards:

<http://www.quizover.com/flashcards/multiplicity-in-uml-in-class-diagram?pdf=1505>

Interactive Question:

<http://www.quizover.com/question/multiplicity-in-uml-in-class-diagram?pdf=1505>

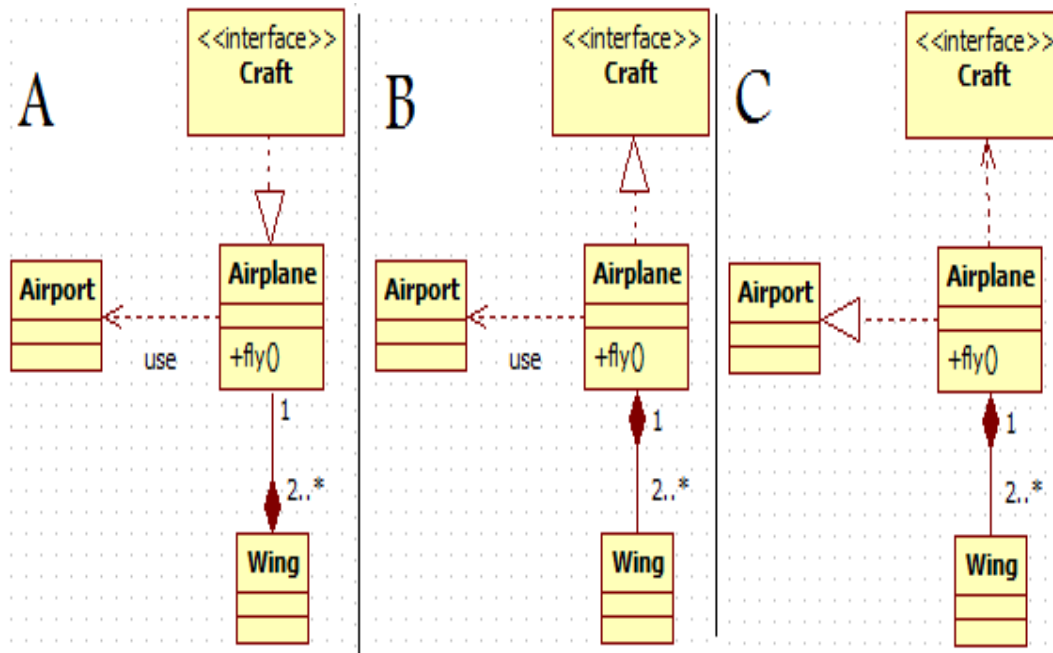
4.1.7. Class Airplane is a Craft, that has Wings. It uses Airport to fly.

...

Author: JavaChamp Team

Class Airplane is a Craft, that has Wings. It uses Airport to fly.

Which diagram best depicts class Airplane?



Please choose only one answer:

- A
- B
- C

Check the answer of this question online at QuizOver.com:

Question: [how to depict a class in a class diagram in uml?](http://www.quizover.com/question/how-to-depict-a-class-in-a-class-diagram-in-uml?pdf=1505)

Flashcards:

<http://www.quizover.com/flashcards/how-to-depict-a-class-in-a-class-diagram-in-uml?pdf=1505>

Interactive Question:

<http://www.quizover.com/question/how-to-depict-a-class-in-a-class-diagram-in-uml?pdf=1505>

4.1.8. What is an association class?

Author: JavaChamp Team

What is an association class?

Please choose only one answer:

- an association class is a term used to distinguish the parent class of an association
- an association class is a class introduced to carry attributes and operations of an association between two classes.
- an association class is a class introduced to replace a one-to-one association between two classes

Check the answer of this question online at QuizOver.com:

Question: [association class in uml](#)

Flashcards:

<http://www.quizover.com/flashcards/association-class-in-uml?pdf=1505>

Interactive Question:

<http://www.quizover.com/question/association-class-in-uml?pdf=1505>

4.1.9. What are Class Diagrams used for?

Author: JavaChamp Team

What are Class Diagrams used for?

Please choose only one answer:

- to depict the dynamic interaction between classes
- to model the static structure of your system
- to diagnose your system vulnerabilities

Check the answer of this question online at QuizOver.com:

Question: [when to use class diagrams?](#)

Flashcards:

<http://www.quizover.com/flashcards/when-to-use-class-diagrams?pdf=1505>

Interactive Question:

<http://www.quizover.com/question/when-to-use-class-diagrams?pdf=1505>

4.1.10. What are the differences/similarities between an aggregation and a ...

Author: JavaChamp Team

What are the differences/similarities between an aggregation and a composition?

Please choose all the answers that apply:

- both represent a subclassing relationship
- both represent an ownership relationship
- aggregation is stronger than composition in terms of life cycle dependency between the involved classes
- in a composition relationship, deleting the instance of the owner (container) class would result in deletion of the instances of the contained class

Check the answer of this question online at QuizOver.com:

Question: [composition and aggregation in uml](#)

Flashcards:

<http://www.quizover.com/flashcards/composition-and-aggregation-in-uml?pdf=1505>

Interactive Question:

<http://www.quizover.com/question/composition-and-aggregation-in-uml?pdf=1505>

4. Chapter: Sequence Diagram

1. Sequence Diagram Questions

4.1.1. What is a sequence diagram used for?

Author: JavaChamp Team

What is a sequence diagram used for?

Please choose only one answer:

- it is used to capture a dynamic behavior in your system
- it is used to capture a static state of a part of your system
- it is used to depict the associations between the system's classes

Check the answer of this question online at QuizOver.com:

Question: [what does a sequence diagram in uml mean](#)

Flashcards:

<http://www.quizover.com/flashcards/what-does-a-sequence-diagram-in-uml-mean?pdf=1505>

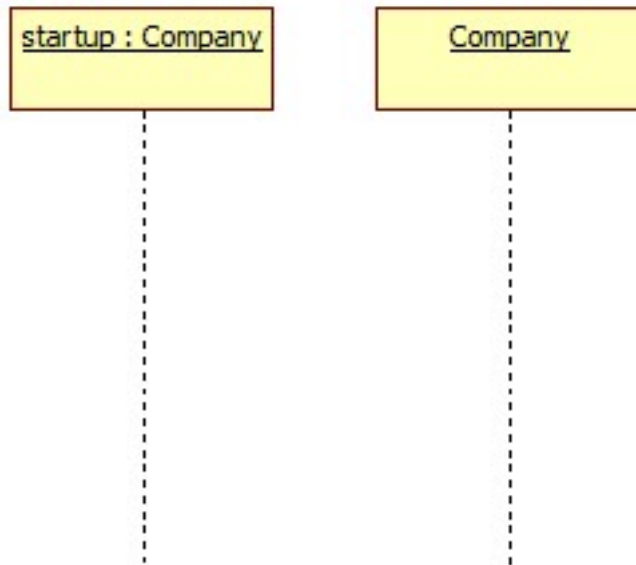
Interactive Question:

<http://www.quizover.com/question/what-does-a-sequence-diagram-in-uml-mean?pdf=1505>

4.1.2. What is the difference between the following two lifelines that rep...

Author: JavaChamp Team

What is the difference between the following two lifelines that represent a participant in a sequence diagram?



Please choose all the answers that apply:

- startup:Company represents all instances of class Company
- startup:Company represents an instance of class Company
- Company represents an anonymous instance of the Company class
- both are exactly the same

Check the answer of this question online at QuizOver.com:

Question: [lifelines in the sequence diagram](#)

Flashcards:

<http://www.quizover.com/flashcards/lifelines-in-the-sequence-diagram?pdf=1505>

Interactive Question:

<http://www.quizover.com/question/lifelines-in-the-sequence-diagram?pdf=1505>