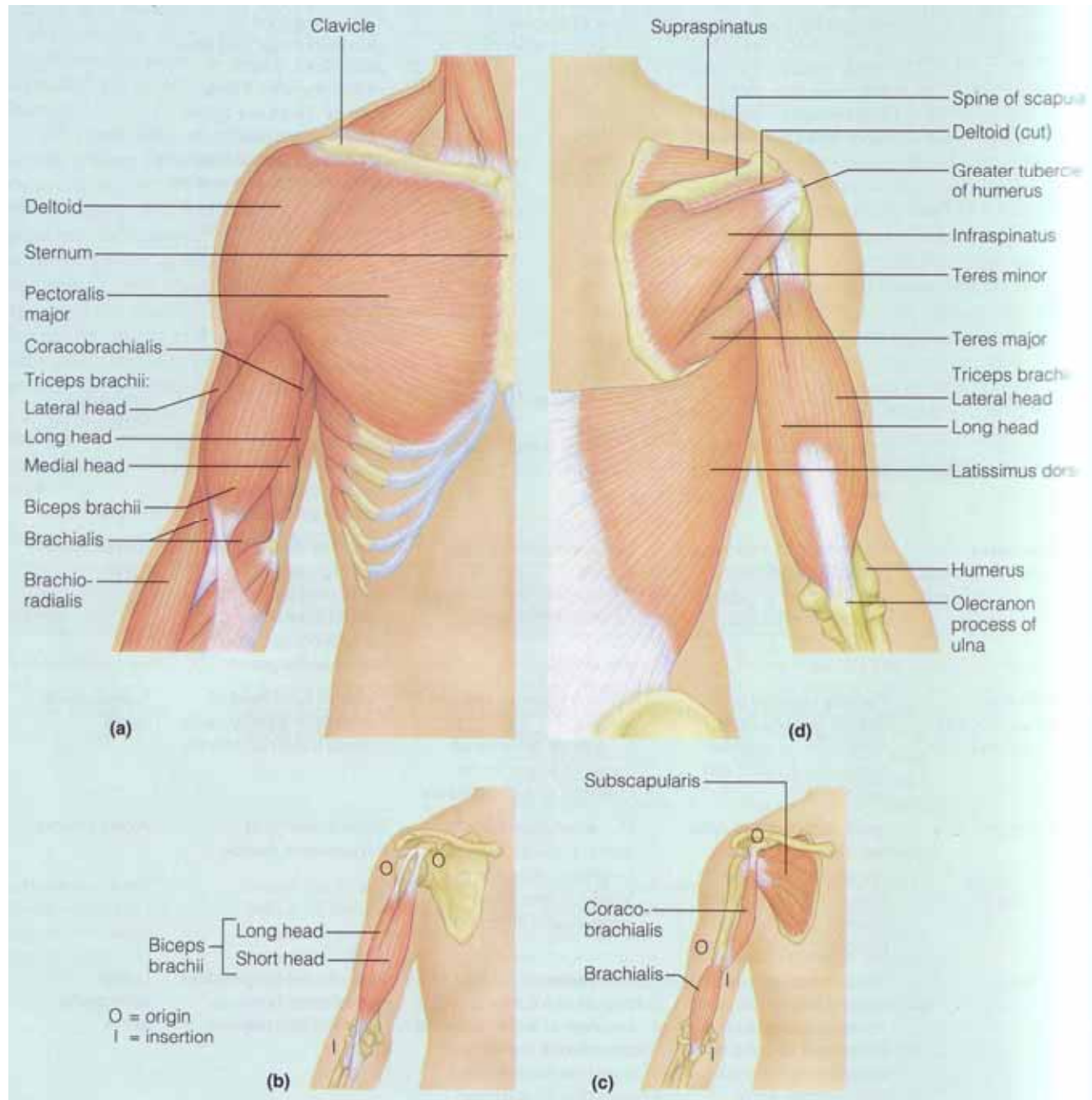
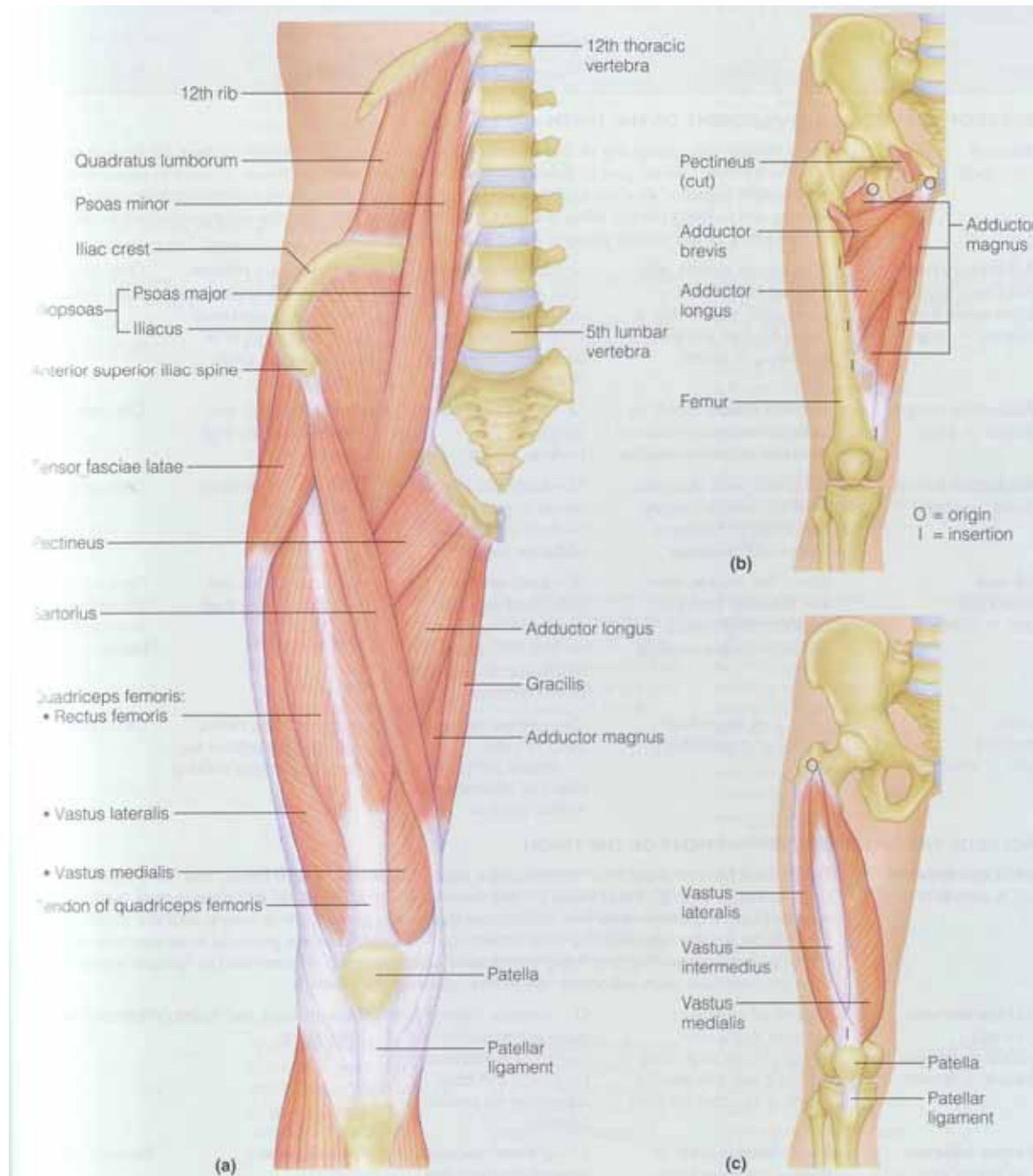


Section 38: Muscle - Anatomy

- Muscle types:
 - cardiac muscle: composes the heart
 - smooth muscle: lines hollow internal organs
 - skeletal (striated or voluntary) muscle:
attached to skeleton via tendon & movement
- Skeletal muscle 40-45% of body weight
 - > 430 muscles
 - ~ 80 pairs produce vigorous movement
- Dynamic & static work
 - Dynamic: locomotion & positioning of segments
 - Static: maintains body posture

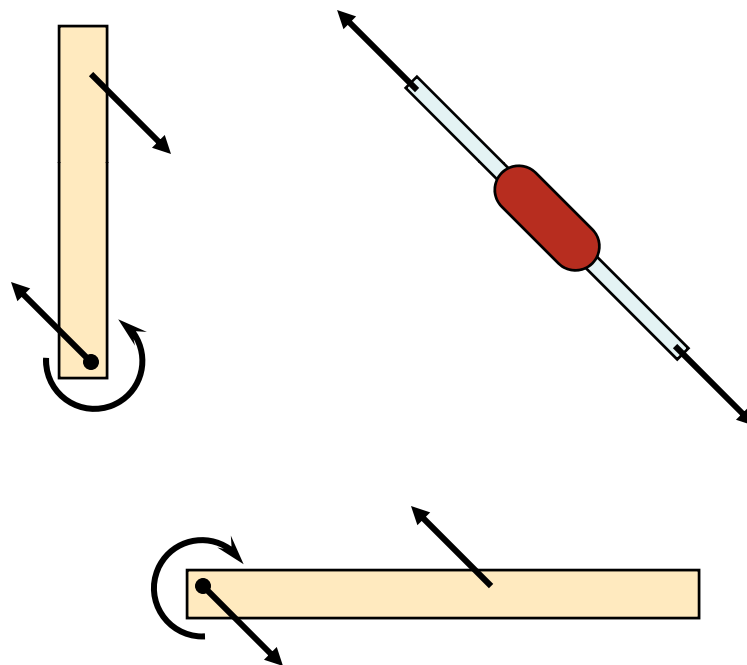
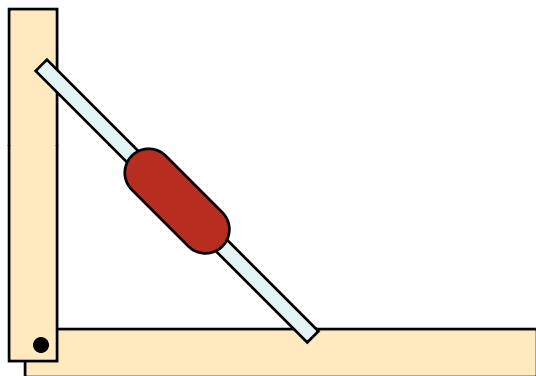




38-4

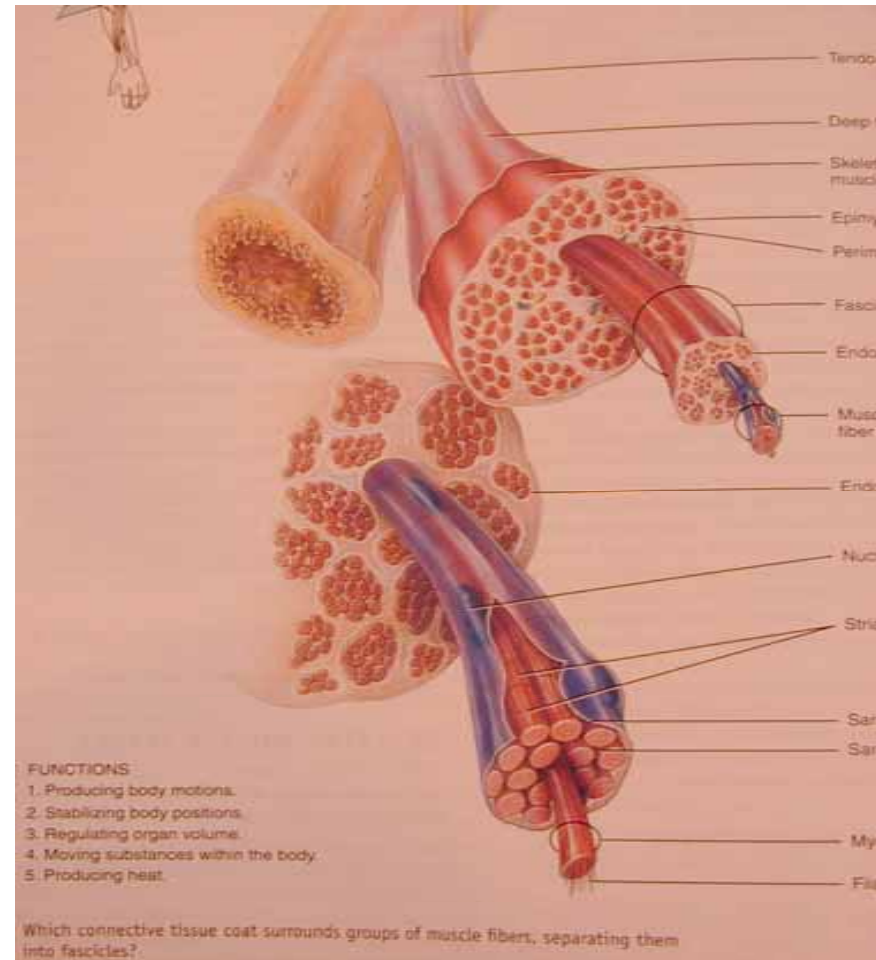
From: Garner

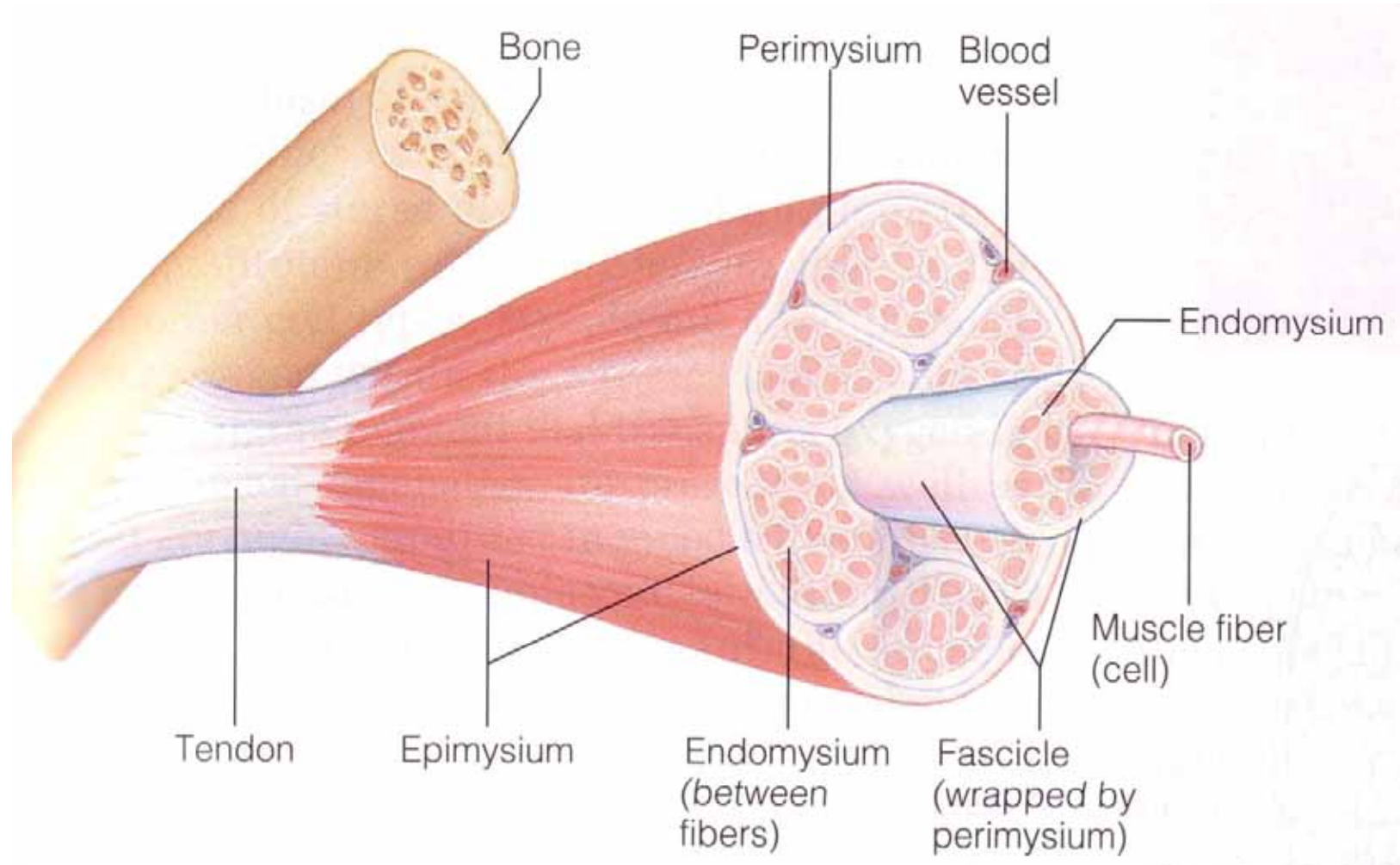
Marieb, 1997



Muscle Architecture - Macro

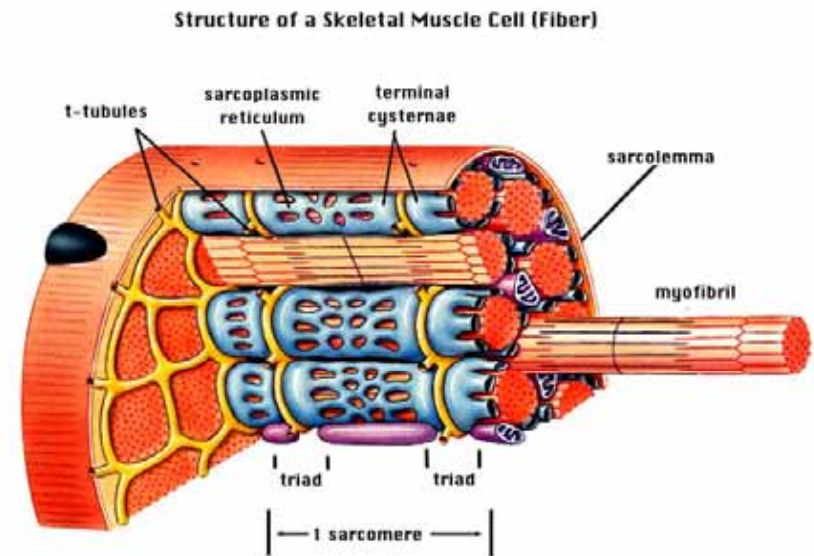
- Key Words:
- tendon
- Epimysium
- Fasciculae
- Perimysium
- muscle fibers
- Endomysium
- myofibril





Muscle Architecture - Micro

- Key Words:
- sarcomere
- Actin -double strand, wound
- Myosin- twisted golf clubs, heads facing out in a spiral fashion down the bundled tails
- Z- line , M - line
- cross bridges



Skeletal Muscle Structure & Organization

