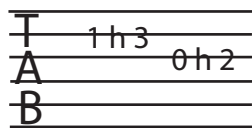


Lesson 24

Guitar Techniques



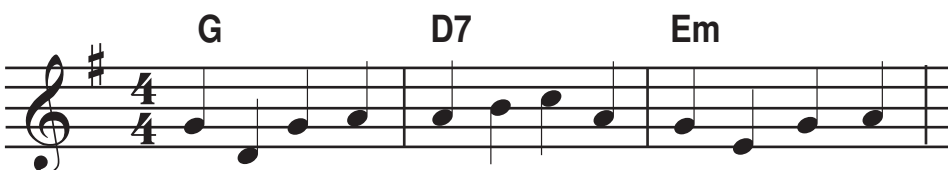
A curved line connecting notes of different pitch is called a **slur**. Slur upward by placing a different left-hand finger (not the same finger, as in a portamento) on the new note very quickly and firmly.



In some styles of guitar-playing, a very aggressive upward slur is called a **hammer-on**. In tablature it is notated "h".

Music Theory for Guitar

When choosing chords to accompany a melody, look for chords that include a lot of the notes in the melody. Unless there are accidentals, you should be able to choose from chords in the key.

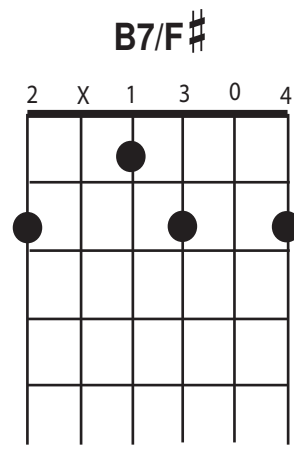
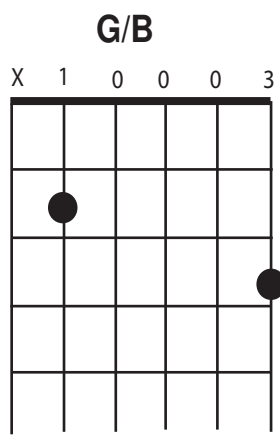
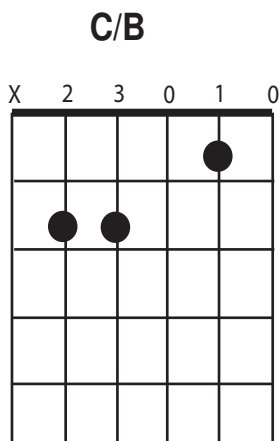
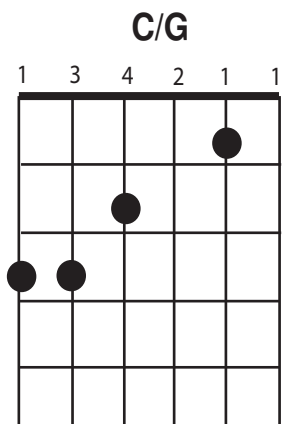


Chords

Sometimes a good bass line calls for the lowest note in a chord to be something other than the root of the chord*. Often marked in a chord symbol following a slash mark, the bass note may or may not be a note that is normally in the chord.

Picking Pattern 4: $\begin{matrix} a \\ p \end{matrix} i m i \begin{matrix} a \\ p \end{matrix} i m i$

Practice plucking p and a at the same time.



*learn more about chords in which the bass is not the root: <http://cnx.org/content/m10877/latest/>