

# Lesson 8

## Common Notation

A dot right after a note means:  
add another half  
of the original length of the note:

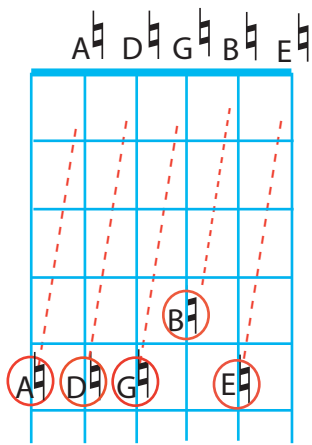
Dotted half = half + quarter



Dotted quarter = quarter + eighth



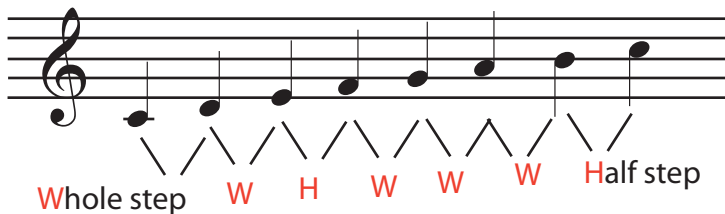
## Music Theory for Guitar: Tuning



Remember that you can find the open string notes at a fret on a lower string.  
You can use this to tune your guitar.  
Tune the lowest string to E.  
Then tune each string to the string below it at the fifth (or fourth) fret.\*

The tuning fret is different for the B string because of differences in the spacings between the natural notes:  
some have two frets (a **whole step**) in between them, some have only one fret (a **half step**) in between them.^

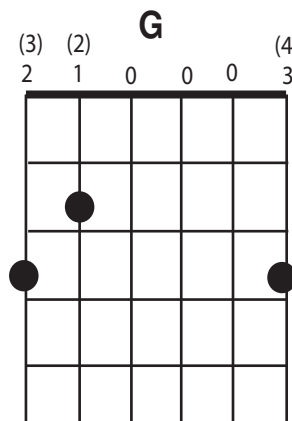
Natural Notes = C Major Scale



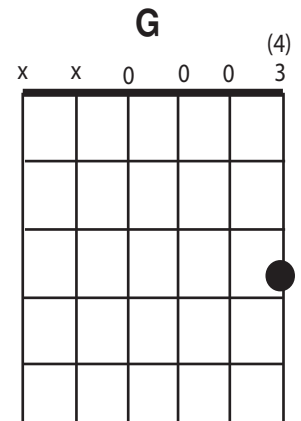
Playing only the natural notes from C to C gives a **C major scale**. Notice the pattern of whole steps and half steps.

## Chord Diagrams

There are many different ways to play every chord.  
Which G chord is right for you right now?



Full Chord



"Easy G"

\*learn more about tuning your guitar: <http://cnx.org/content/m11641/latest/>

^learn more about half steps and whole steps: <http://cnx.org/content/m10866/latest/>