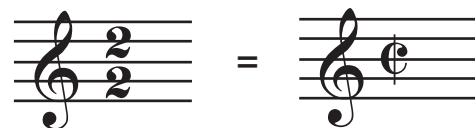


# Lesson 7

## Common Notation

- Whole notes have: an open head, no stem



Whole notes are always four times as long as quarter notes.

Whole rests look a lot like half rest, but they hang below the fourth line

Half rests sit on top of the third line

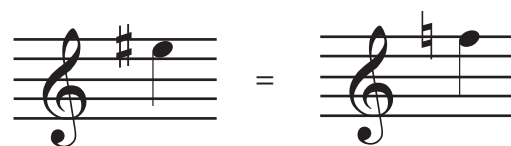
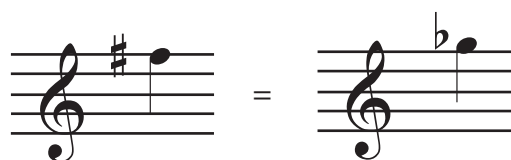
In 2/2 time, also called "cut time", a half note gets one beat.

- "Flat" or "down one half step" on guitar means "one fret lower"



Remember, Sharps, flats, and naturals remain in effect until the next bar line.

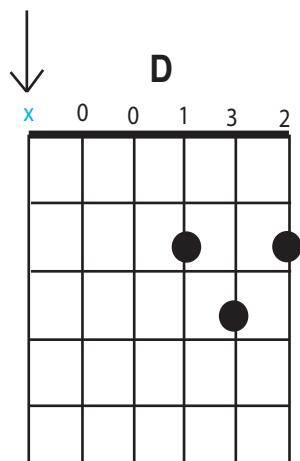
Enharmonic notes on the guitar are different "spellings" for the same note, on the same fret. Scales and chords can also have enharmonic spellings.\*



F#m = Gbm

## Chord Diagrams

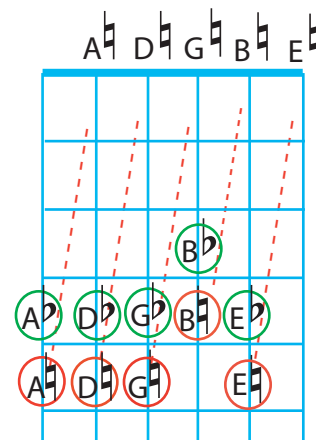
An "x" on a chord diagram means "do not play this string".



## Music Theory for Guitar

You can't go down one fret from an open string, so you have to find the natural note on the string below, and go down one fret from there.

= whole note strum



\*learn more about enharmonic spelling: <http://cnx.org/content/m11641/latest/>